

# PRINCETON FUTURE'S DESIGN AT DOHM ALLEY PROJECT

TUCKED OFF OF NASSAU STREET IN PRINCETON, LIES A MODEST ALLEY, 80' X 10', A FORLORN SLOT BETWEEN TWO BUILDINGS, A PASS-THROUGH FROM NORTH TO SOUTH, INAUSPICIOUS AT BEST, BUT LIKE SO MANY ACROSS URBAN AMERICA. SLOPPILY PAVED WITH UNEVEN ASPHALT AND STREWN WITH LITTER, THE ALLEY PERFECTLY ALIGNS WITH THE PRECISE ASHLAR AND IRON EASTERN PORTAL OF MCKIM MEAD & WHITE'S FITZRANDOLPH GATE. ITS PROXIMITY TO THE TOWN'S MAIN INTERSECTION AND TO NASSAU HALL DEMANDED A DESIGN INTERVENTION - INTO THIS NEGATIVE URBAN SPACE WE CREATED AN OPEN AND FREE SPACE IN THE PUBLIC REALM TO DELIGHT THE SENSES. DOHM ALLEY IS SPONSORED BY A LOCAL NON-PROFIT THAT PERFORMS CIVIC PLANNING FOR THE COMMUNITY. 100,000\$ WAS RAISED AND OVER 1000 HOURS WERE DONATED BY ARCHITECTS, ARTISTS AND PERFORMANCE PROFESSIONALS.

## REBORN AS CIVIC SPACE

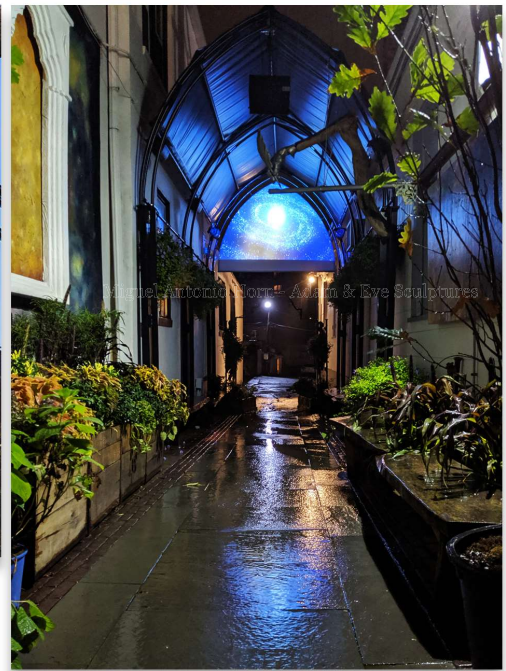
THE DESIGN TEAM IMAGINED A PUBLIC SPACE OF PASSAGE AND PRESENTATION: ONE FOR CROSSING AND SMILING, FOR ART AND CULTURE, FOR LINGERING AND LEARNING. A GALLERY AND A THEATER WERE CREATED AS EVENTS INSIDE THE ALLEY. THE ALLEY WAS LANDSCAPED AND ARTISTS INSTALLED SCULPTURES CELEBRATING THE ENGLISH ROMANTIC POETS. A VIDEO DESIGNER AND SOUND DESIGNER CREATED BACKGROUND MOODSCAPES TO TRANSPORT THE VISITOR (WHILE THE VISITOR IS IN TRANSIT) FROM THE ORDINARY TO THOUGHTS UNEXPECTED. WE CREATED A LIVING AND MODULATING URBAN SPACE FROM THE NEGATIVE THAT HAD EXISTED BEFORE - A PHYSICAL SENSORIUM FOR THE STROLLING PASSERSBY, FREE OF CHARGE, CAPABLE OF EVOLVING IN THE FUTURE AS A PLATFORM FOR ENGAGEMENT IN OUR DEMOCRACY.





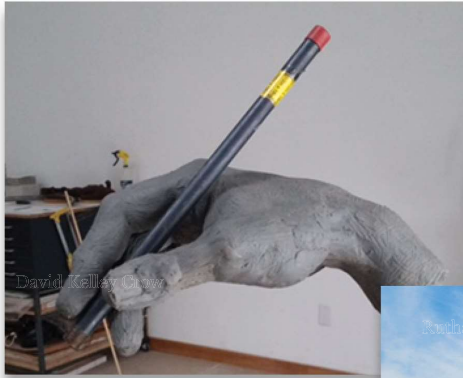
Princeton Future PO Box 1172 Princeton NJ 08542

[www.princetonfuture.org](http://www.princetonfuture.org)



Princeton Future PO Box 1172 Princeton NJ 08542

[www.princetonfuture.org](http://www.princetonfuture.org)



Princeton Future PO Box 1172 Princeton NJ 08542

[www.princetonfuture.org](http://www.princetonfuture.org)

## DESIGNERS

Richard Chenoweth AIA  
 Kevin Wilkes AIA  
 Peter Soderman  
 Rob Gorton  
 Lawrence Roth  
 Peter Abrams  
 David Kelley Crow

## SCULPTORS

Kate Brockman - This Living Hand Sculpture/ Fountain  
 Steven Weiss - William Blake Sculpture  
 George Nista - Percy Bysshe Shelley Sculpture  
 Morgan Dummit - William Wordsworth Sculpture  
 Christopher Smith - Samuel Taylor Coleridge Sculpture  
 Joshua Koffman - Lord Byron Sculpture  
 Ruthann Perry - Mary Shelley Sculpture  
 Jim Dessicino - Tom Dacre Sculpture



## ARTISTS

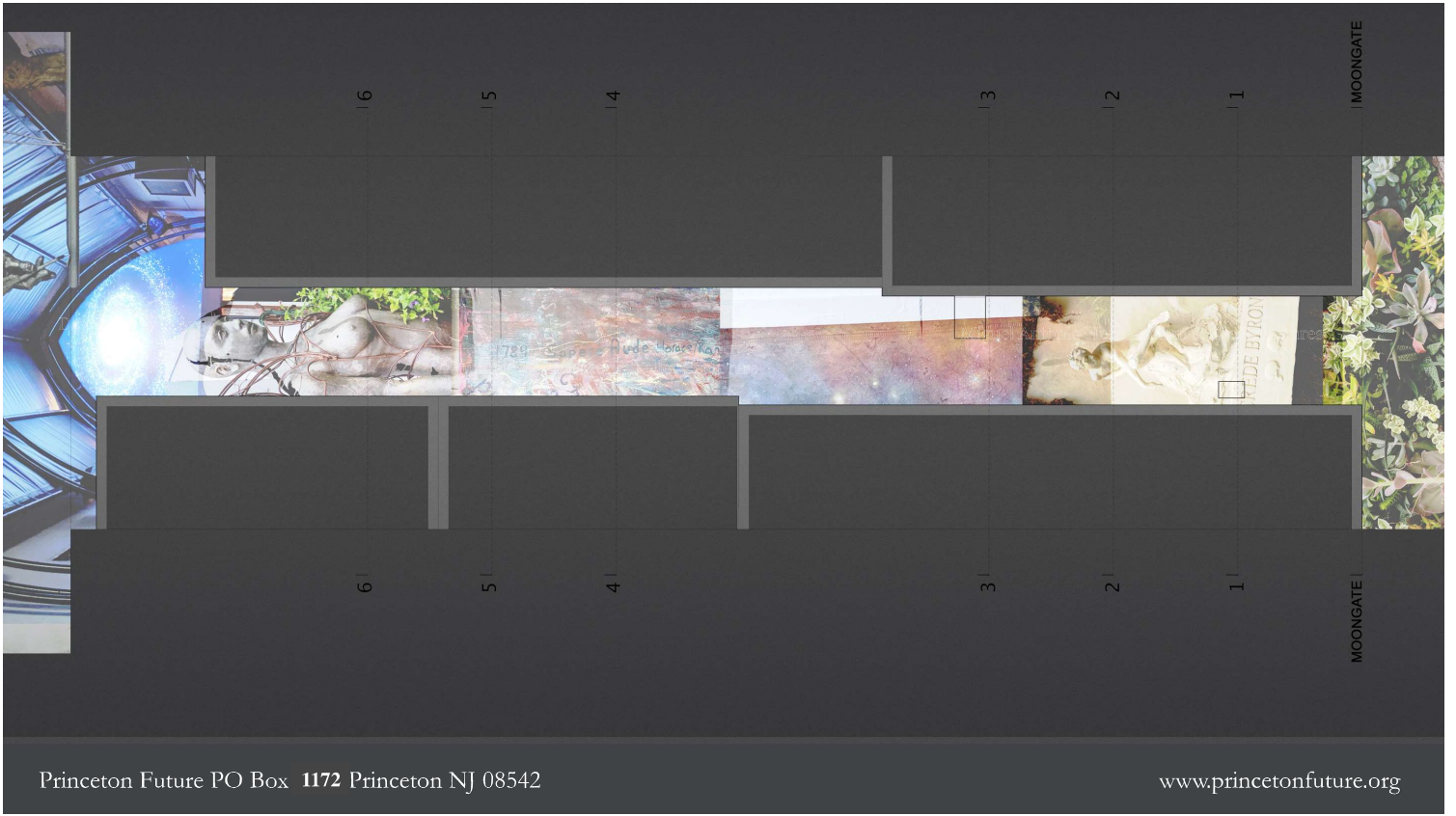
Emma Brigaud - Muralist  
 Bob Kuster - Glass Blower  
 Janice Blayne Paul - Tombstone Lyre  
 Jay Drake - Cattle Trough  
 Bruce Davies - Copper Sluiceway  
 Yousuf Arain & Saima Yusuf - Doors of Perception  
 Miguel Antonio Horn - Adam & Eve Sculptures  
 Erica Rachael - Painter

## CREATOR

Joseph Ruvulo - Livingston Park Nursery  
 Paul Ducharme - Stone Floors  
 Bill Froelich - Fabric Roofs  
 John James Rivera - Spalted Maple Benches  
 Jonathon Shor & Michael Mahoney - Stone Artists  
 Mason Madden - Succulent Moongate

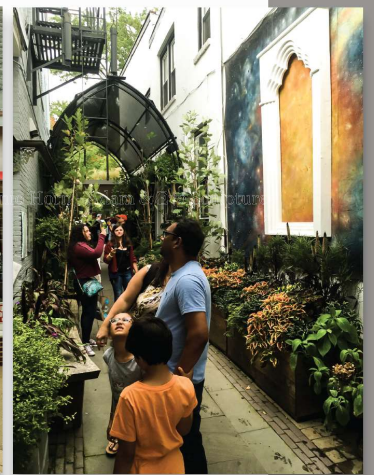
Princeton Future PO Box 1172 Princeton NJ 08542

[www.princetonfuture.org](http://www.princetonfuture.org)



Princeton Future PO Box 1172 Princeton NJ 08542

www.princetonfuture.org



Princeton Future PO Box 1172 Princeton NJ 08542

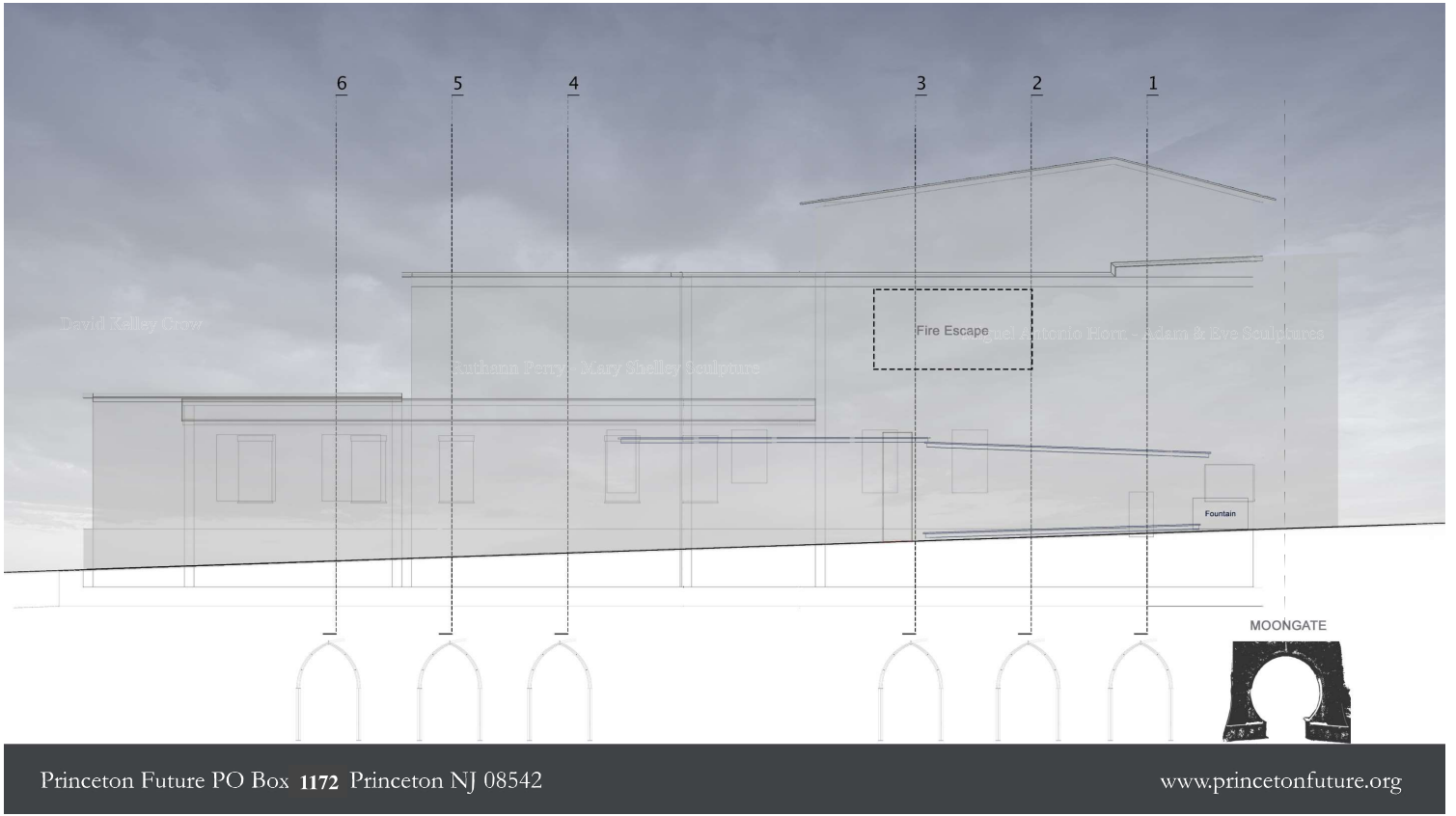
www.princetonfuture.org

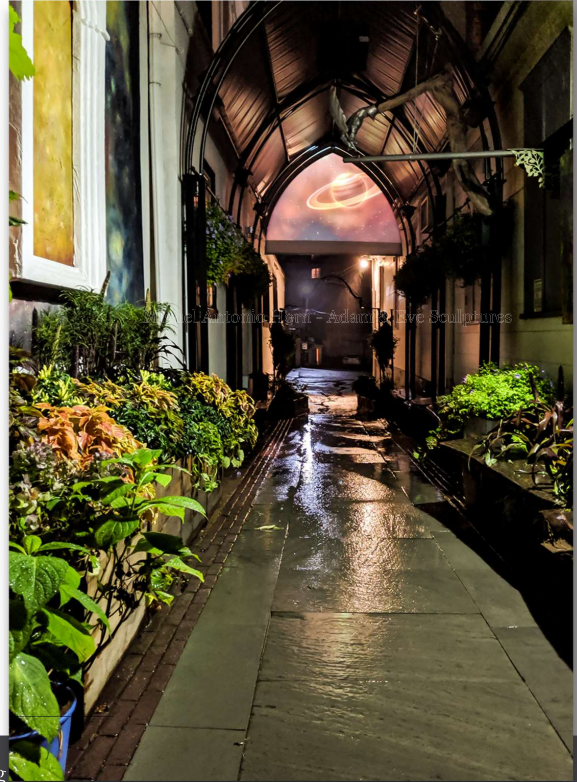
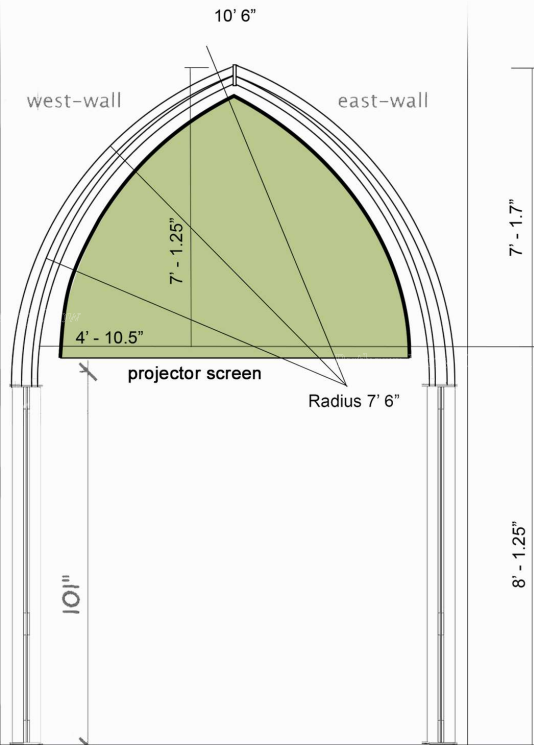


## NEGATIVE CAPABILITY

It is the concept of the English romantic poet John Keats that inspired the Design@Dohm Alley creators to direct the flow of water uphill, against gravity, using the pencil thin tide of flow, for the clear ink of imagination is not bound by reason. Keats revealed his theory in a letter to his brothers pertaining to his doubts of moving forward in a fog of uncertainty . . . “Several things dovetailed in my mind and at once it struck me, what quality went to form a man of achievement especially in literature – I mean negative capability, when a man is capable of being in uncertainties, mysteries and doubts, without any irritable reaching after fact and reason.” For the artist, not knowing is sometimes the gift that catalyzes creativity.







Princeton Future PO Box 1172 Princeton NJ 08542 [www.princetonfuture.org](http://www.princetonfuture.org)

## Project Location

### Project's Location

100-102 Nassau Street, Princeton New Jersey

**PRINCETON FUTURE**  
**PO Box 1172**  
**PRINCETON, NJ**  
**08542**  
**609-921-6100**